

DWG.NO. HW2380369

A

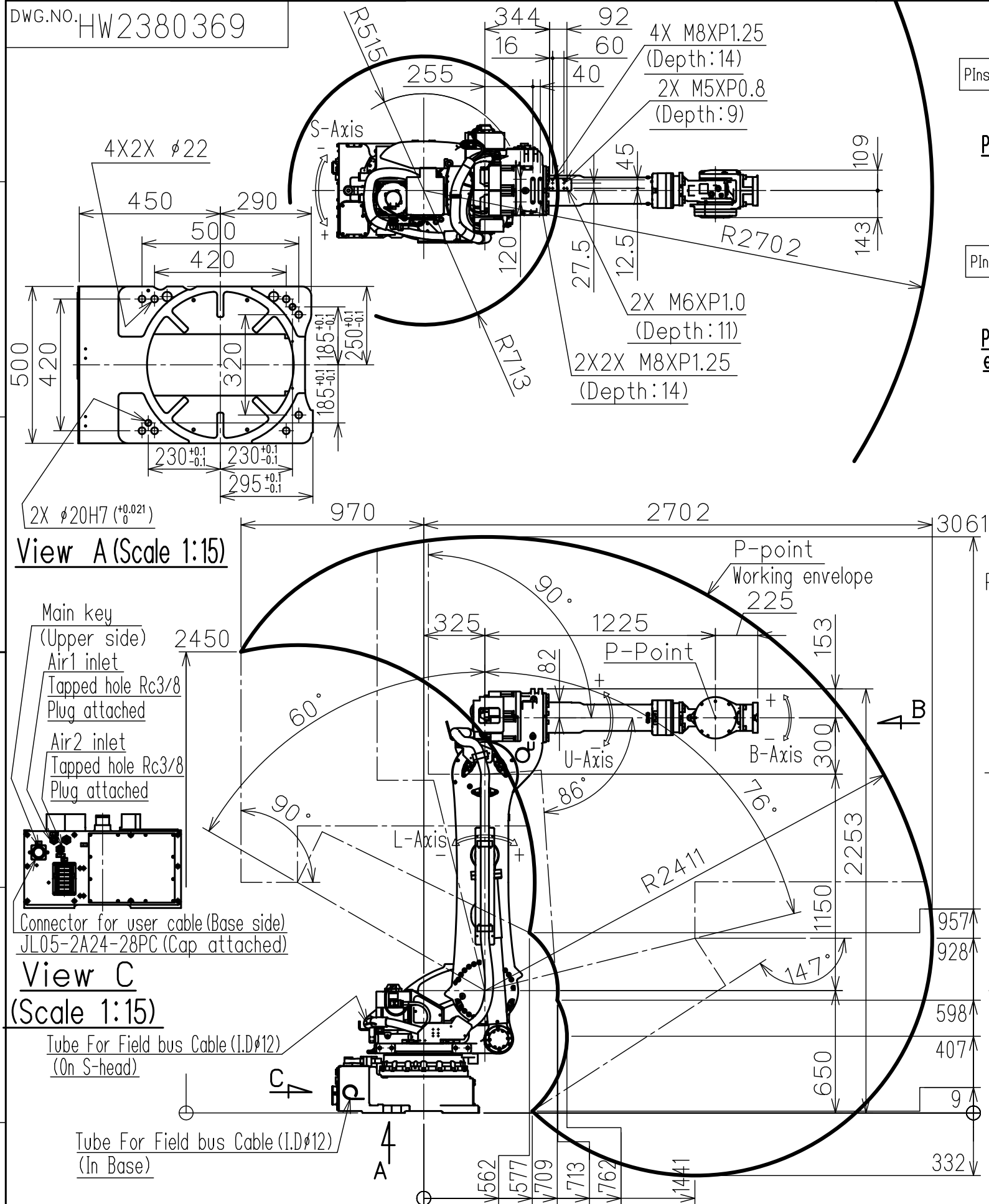
B

C

D

E

F



View A (Scale 1:15)

Main key
(Upper side)
Air1 inlet
Tapped hole Rc3/8
Plug attached
Air2 inlet
Tapped hole Rc3/8
Plug attached
Connector for user cable (Base side)
JL05-2A24-28PC (Cap attached)

View C
(Scale 1:15)

Tube For Field bus Cable (I.D.φ12)
(On S-head)
Tube For Field bus Cable (I.D.φ12)
(In Base)

Note:
1. All rights reserved.
2. Please note that the data is subject to be deleted without advance notice.
3. No warranty is given in relation to the data including the specification.
4. We are not responsible for any damages or loss caused by the use of the data.

FOR STUDY PURPOSE ONLY

SCALE 1:25

YASKAWA
株式会社 安川電機

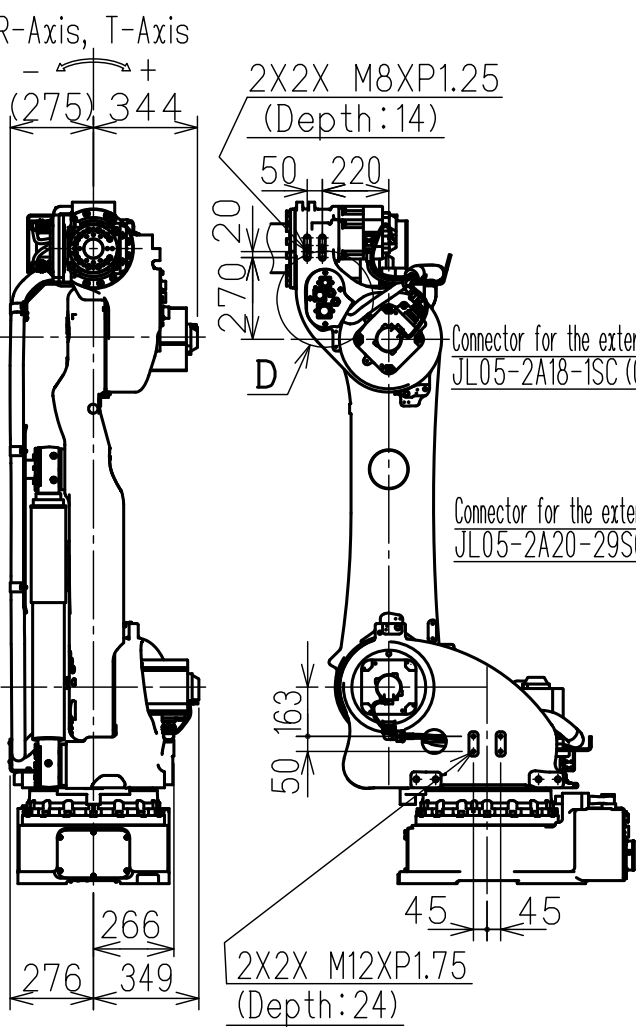
Reference Drawing

TITLE MOTOMAN-GP180 (Food-grade grease type)
DIMENSION DIAGRAM

DRWN DATE May.27.'21
DWG.NO. HW2380369

Pin details of connector for external axis power cable
Pin details of connector for external axis encoder cable
Pin details of connector for user cable (Casing side/Base side)

Type	Specification
YR-1-06VX180-F00	Food-grade grease type



View D (Scale 1:15)

View B (Scale 1:10)

Item	Model	MOTOMAN-GP180
Configuration		Vertically articulated
Degree of Freedom		6
Payload	Wrist	180kg
	On U-arm	30kg
Repeatability (*1)		0.05mm
Range of Motion	S-Axis (Turning)	-180° - +180°
	L-Axis (Lower Arm)	-60° - +76°
	U-Axis (Upper Arm)	-86° - +90°
	R-Axis (Roll)	-360° - +360°
	B-Axis (Pitch/Yaw)	-130° - +130°
	T-Axis (Twist)	-360° - +360°
Maximum Speed	S-Axis	2.18 rad/s, 125°/s
	L-Axis	2.01 rad/s, 115°/s
	U-Axis	2.18 rad/s, 125°/s
	R-Axis	3.18 rad/s, 182°/s
	B-Axis	3.05 rad/s, 175°/s
	T-Axis	4.63 rad/s, 265°/s
Allowable Moment	R-Axis	1000 N·m (102kgf·m)
	B-Axis	1000 N·m (102kgf·m)
	T-Axis	618 N·m (63kgf·m)
Allowable Inertia (GD ² /4)	R-Axis	90 kg·m ²
	B-Axis	90 kg·m ²
	T-Axis	46.3 kg·m ²
Mass		1020kg
Protection rating		Body: IP65 Wrist: IP67
Mounting method		Floor-mounted
Ambient Conditions	Temperature	+15°C - +45°C
	Humidity	20%RH - 80%RH
	Vibration acceleration	4.9m/s ² (0.5G) or less
	Altitude	1000m or less
	Flatness for installation	0.5mm or less
	Others	•Free from oil soot. •Free from explosive and corrosive gas or liquid. •Free from excessive electrical noise (plasma). •Free from strong magnetic field.
Power requirements		5.0kVA
Applicable controller		YRC1000

*1 Repeatability conforms to ISO 9283. Units: mm
*2 The manipulator is in the home position in this drawing.

Main key (Upper side)

Air2 outlet
Tapped hole Rc3/8
Plug attached
Connector for user cable (Casing side)
JL05-2A24-28SC (Cap attached)

Air1 outlet
Tapped hole Rc3/8
Plug attached

Connector for the external axis power cable
JL05-2A18-ISC (Cap attached)

Connector for the external axis encoder cable
JL05-2A20-29SC (Cap attached)

SIZE A3