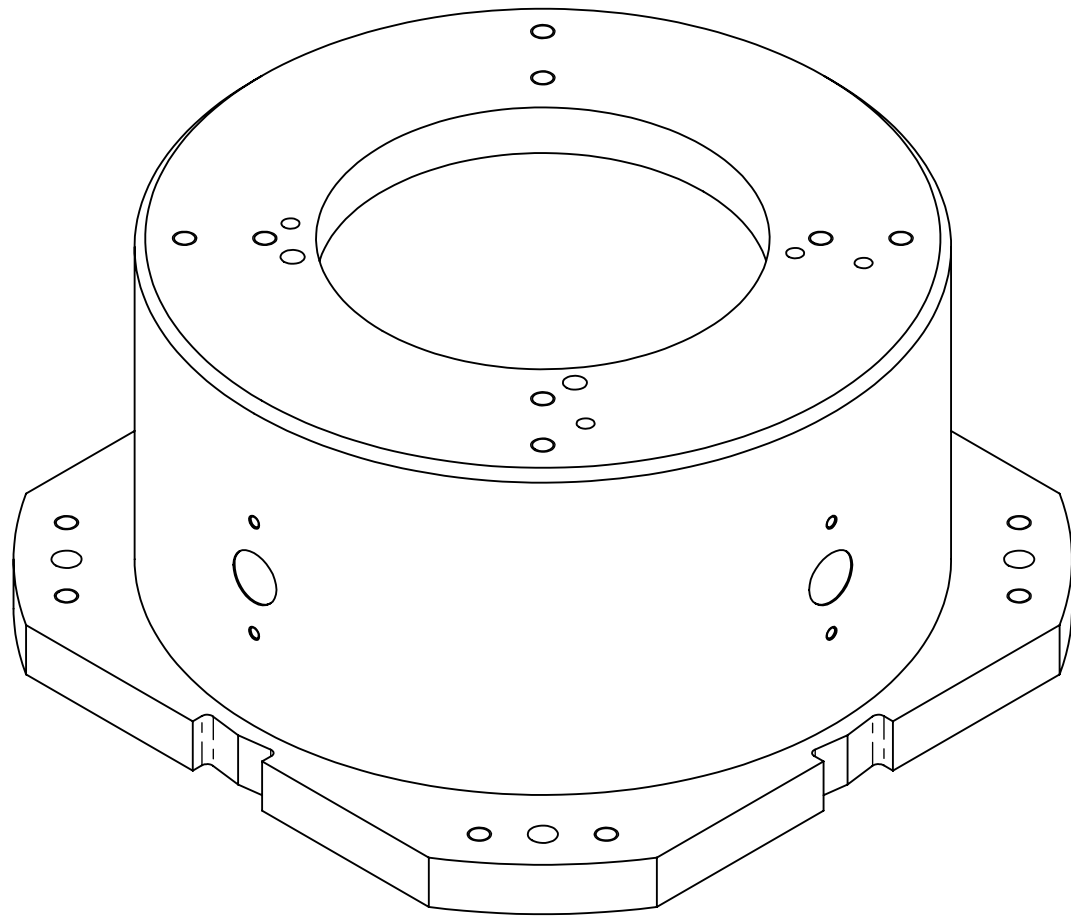
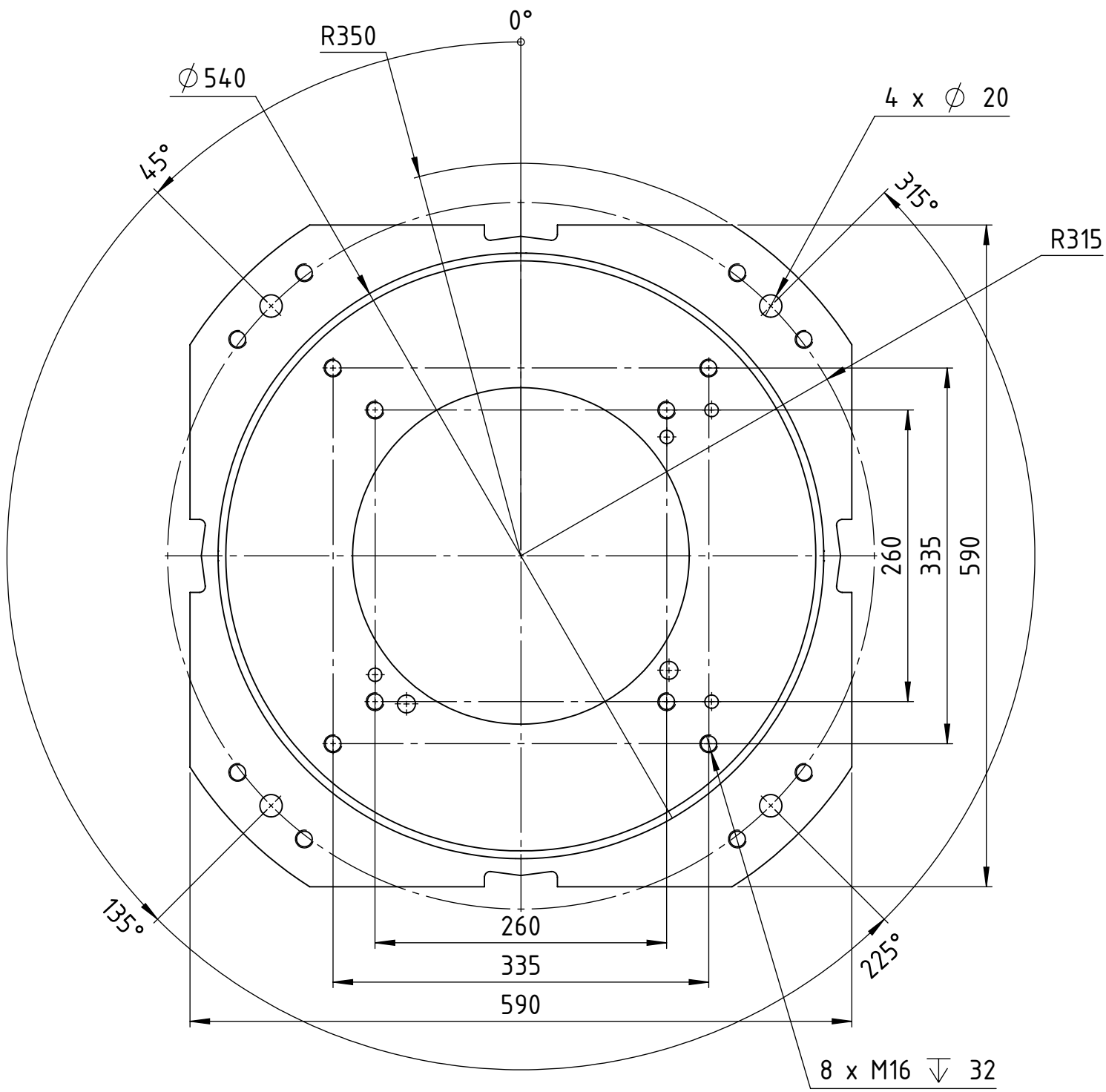
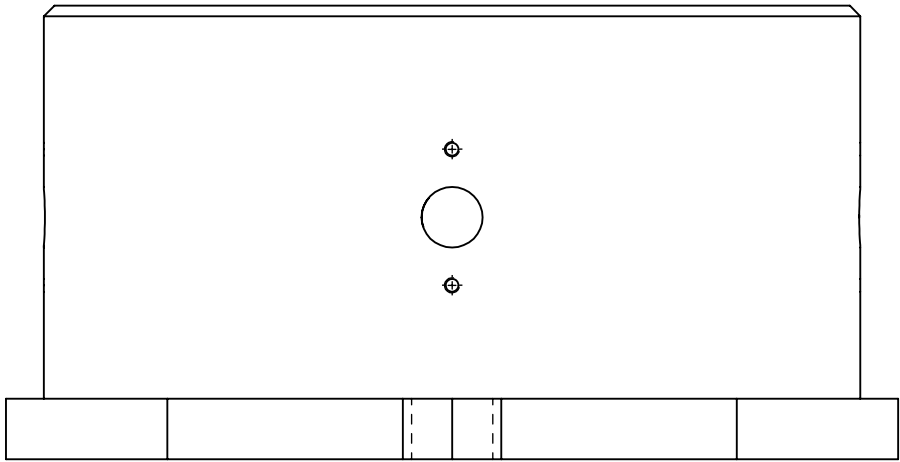
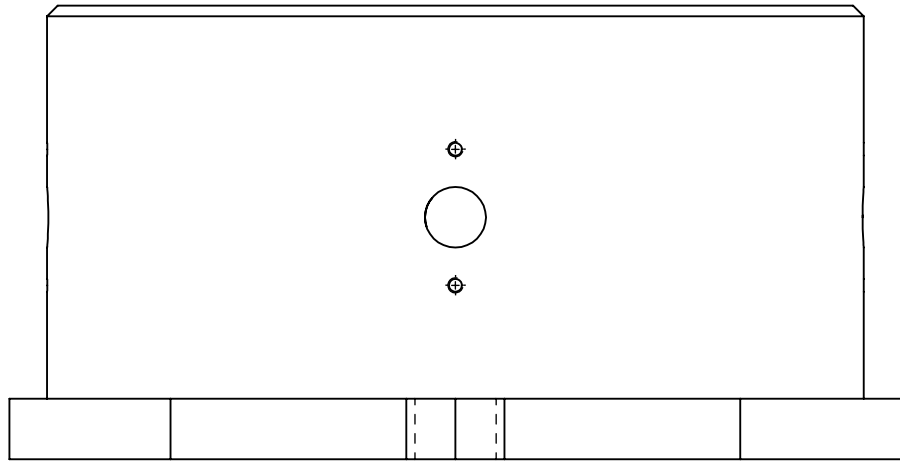
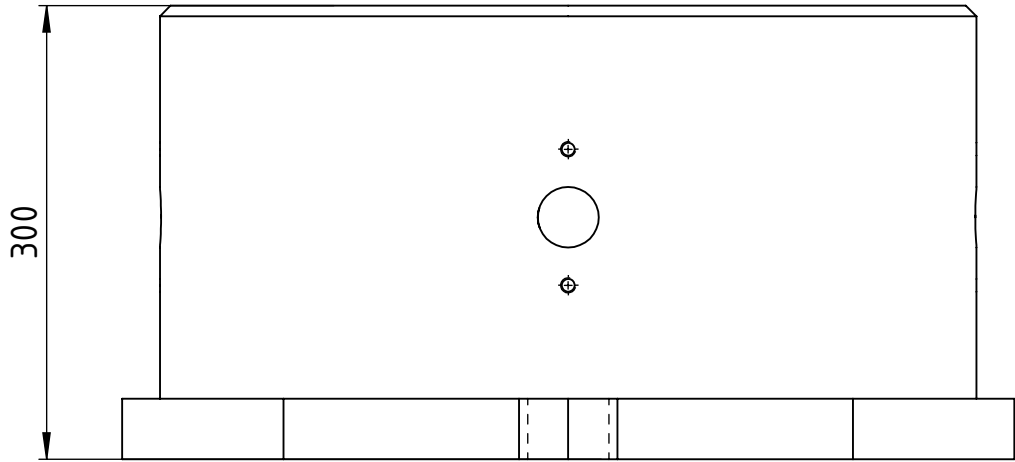
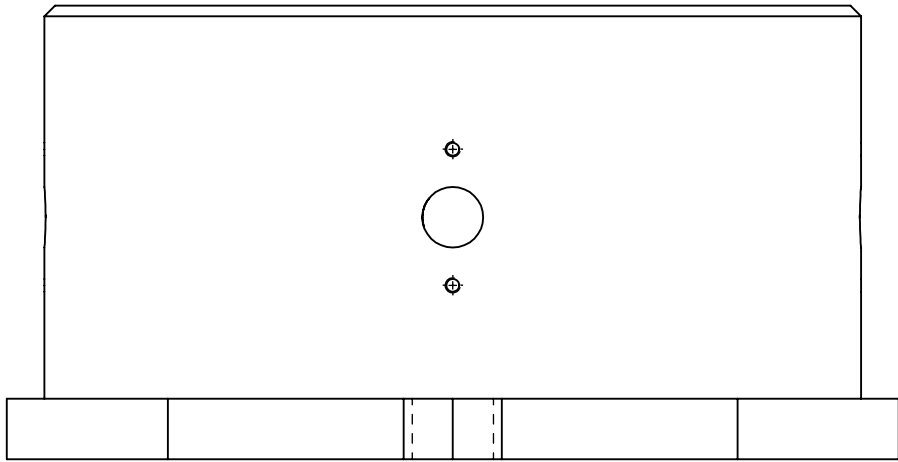


The reproduction, distribution and utilization of this document as well as the communication of its contents to others without express authorization is prohibited. Offenders will be held liable for the payment of damages. All rights reserved in the event of the grant of a patent, utility model or design.

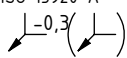
A
B
C
D
E
F
G
H



rev.	revision text:	rev.date:	rev.by:	aprv. date:	aprv. by:
02	improved cutline bottom plate	2022-04-22	MicNaeb	2022-04-25	RobWagn
03	modified tolerances	2023-07-19	MicNaeb	2023-07-19	RaSeid
04	general simplification	2023-11-23	KaIGund	2023-11-23	MicNaeb
05	general simplification	2023-11-24	KaIGund	2023-11-24	MicNaeb
06	general simplification	2023-11-29	KaIGund	2023-11-29	MicNaeb

status: Released		SAP EMEA no:		dimension:		weight:	
SAP AH no: 222901		www.yaskawa.eu.com		created: 2022-04-01		90 kg	
title / description: robot stand K-300		drawn: 2022-04-01		drawn: 2022-04-01		sheet: A2	
drawing-no: 0000135530-100		revision: 06		drawing-no: 0000135530-100		revision: 06	

where nothing else is indicated
tolerances: DIN ISO 2768-mH
welding: DIN EN ISO 13920-A
no sharp edges



12 11 10 9 8 7 6 5 4 3 2 1

A
B
C
D
E
F
G
H