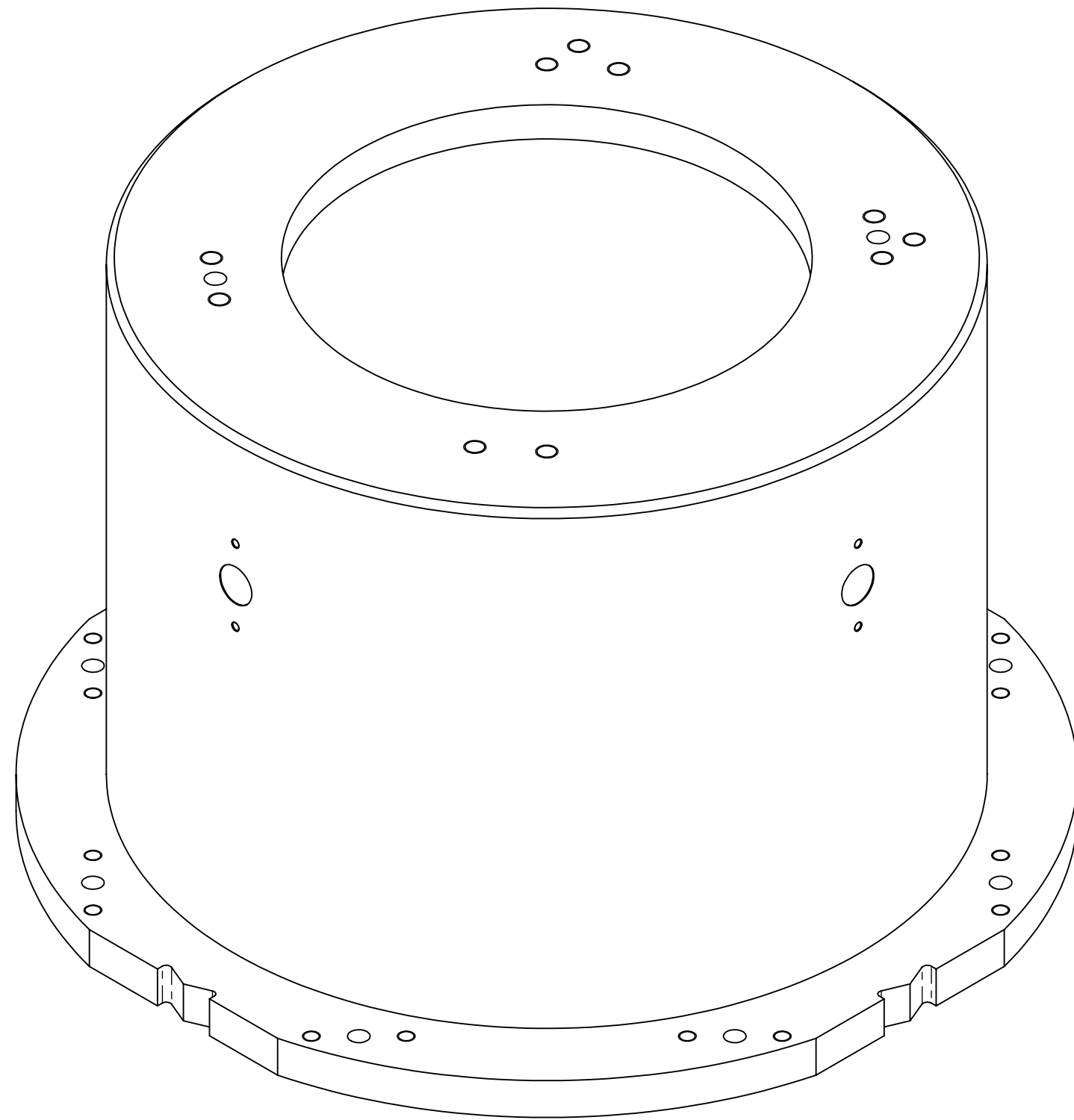
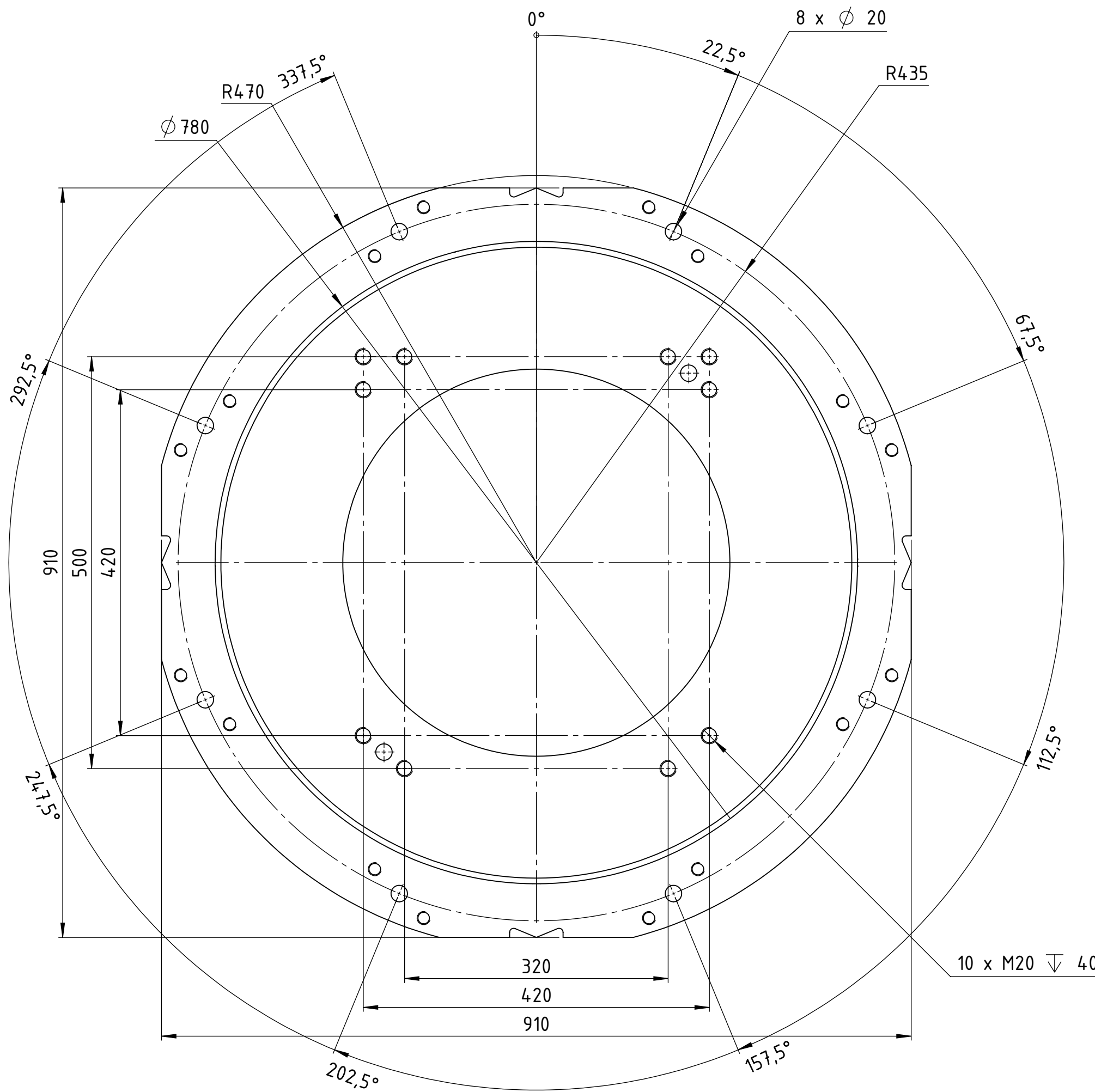
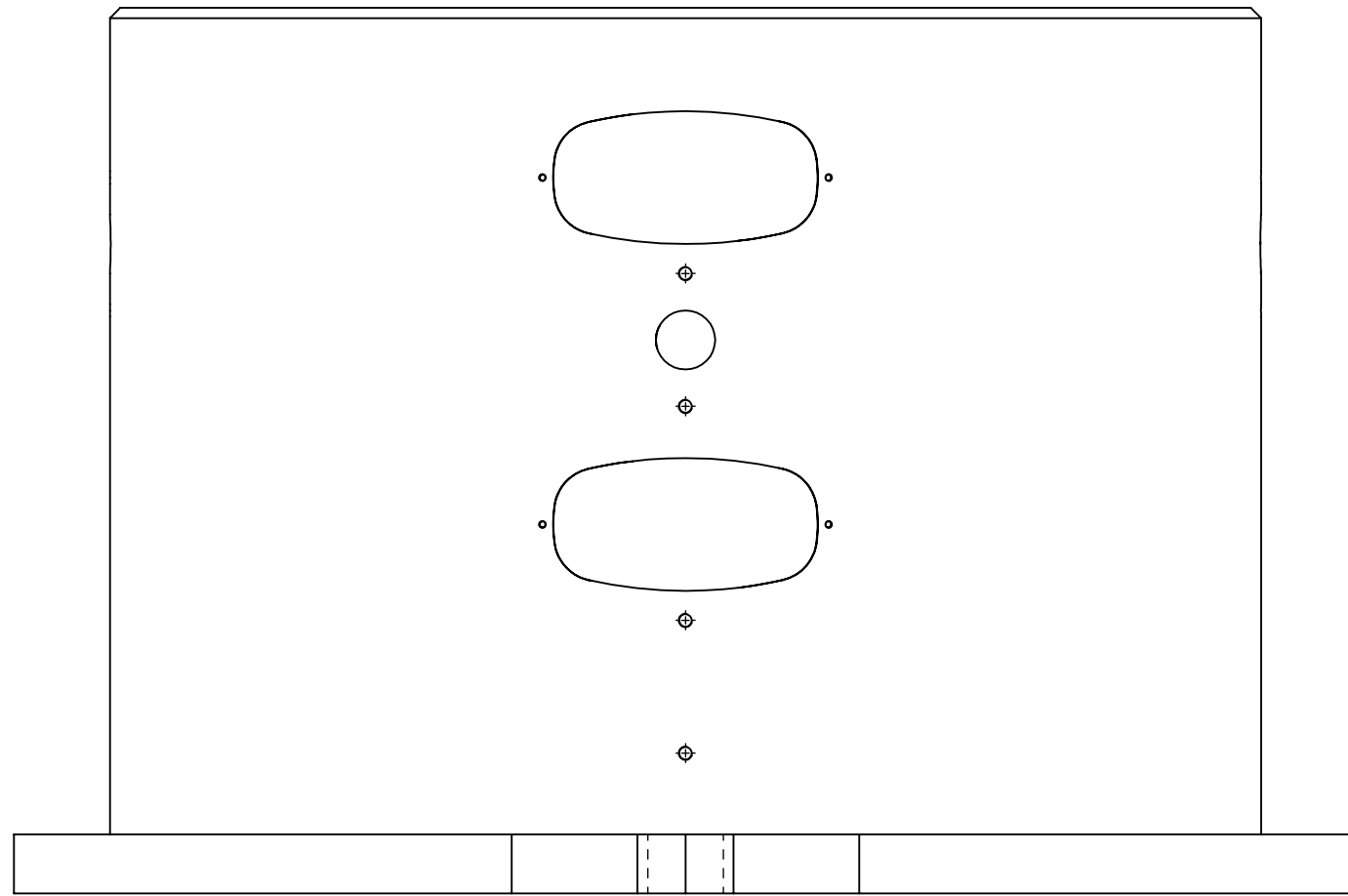
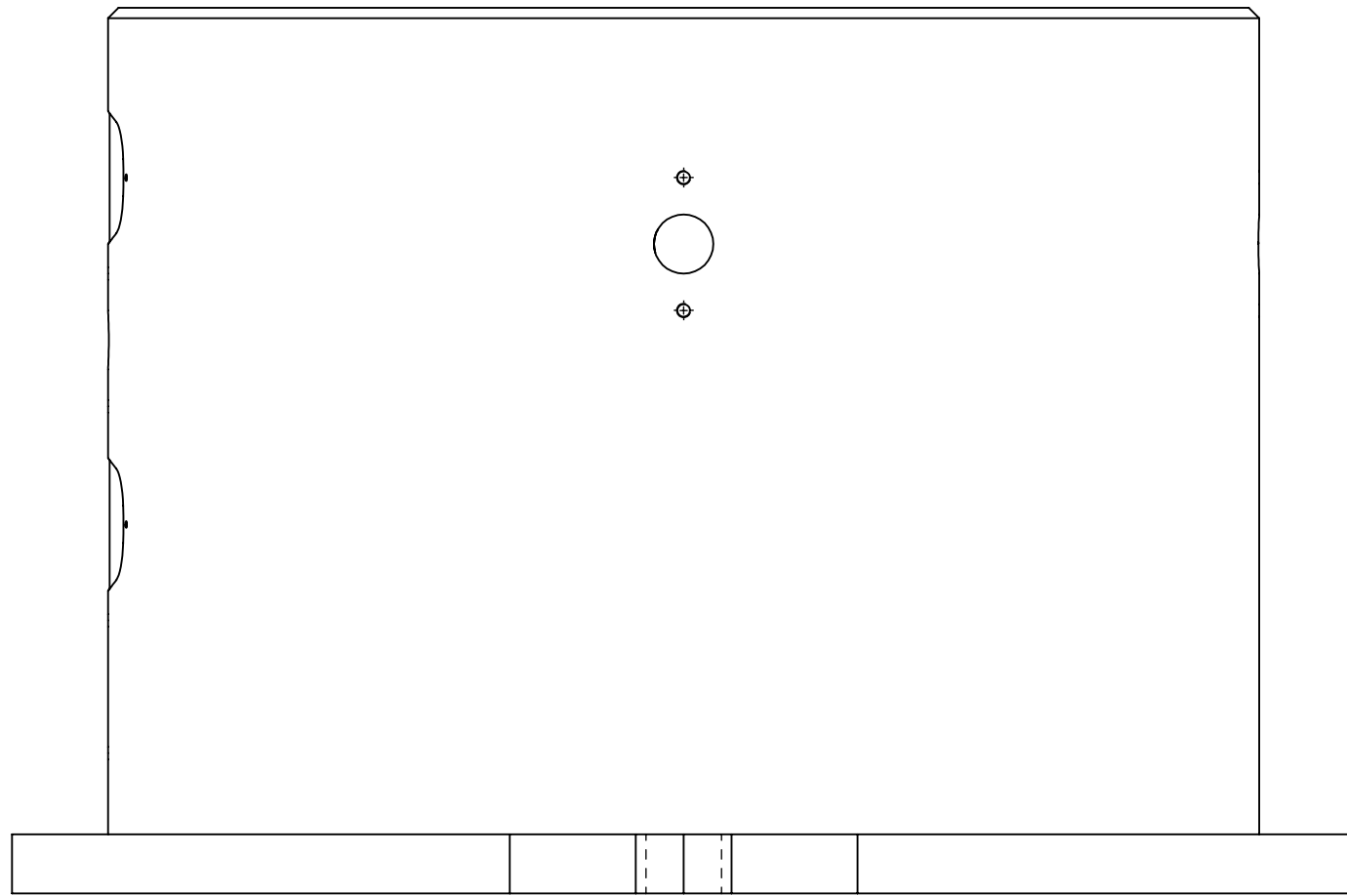
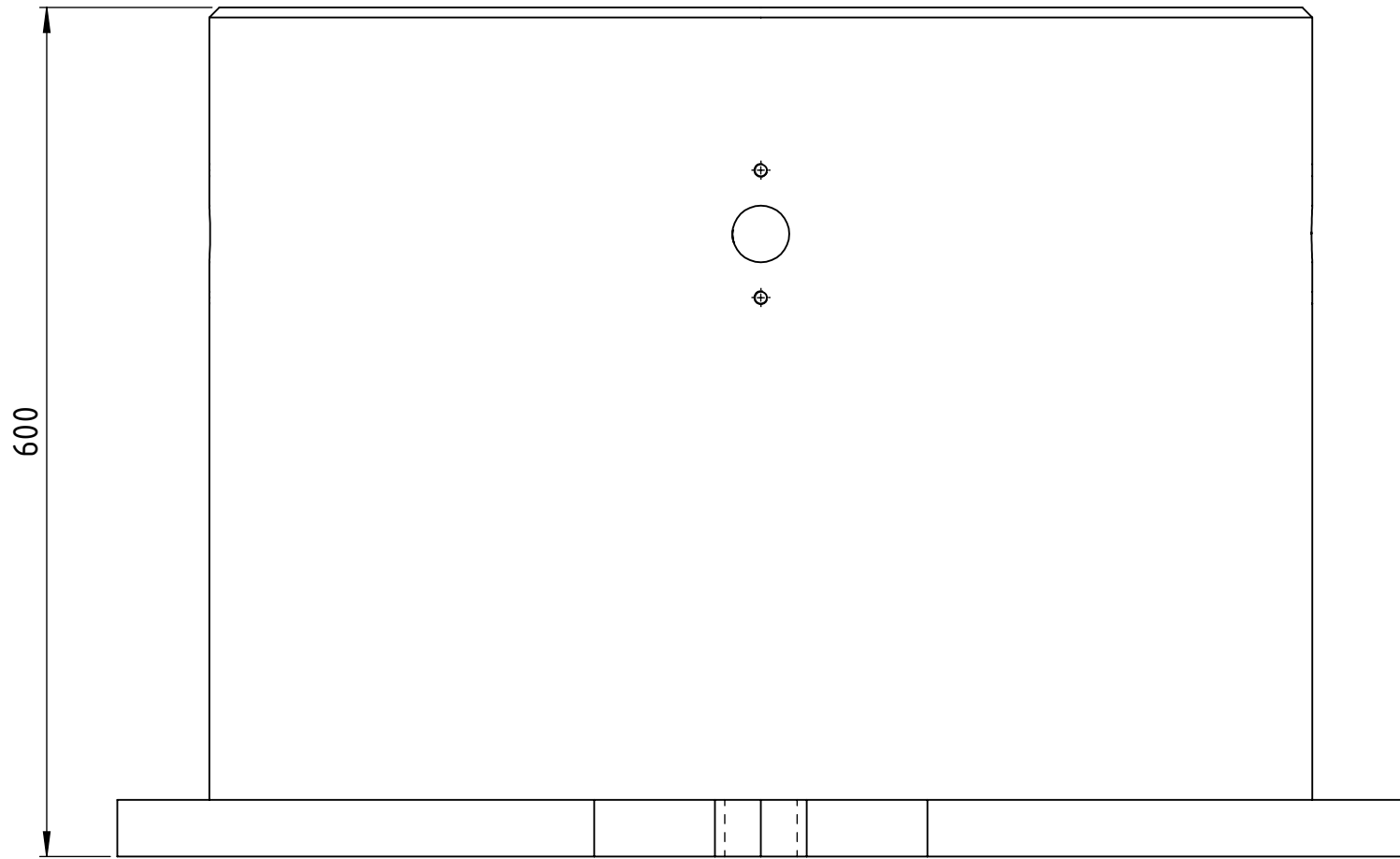
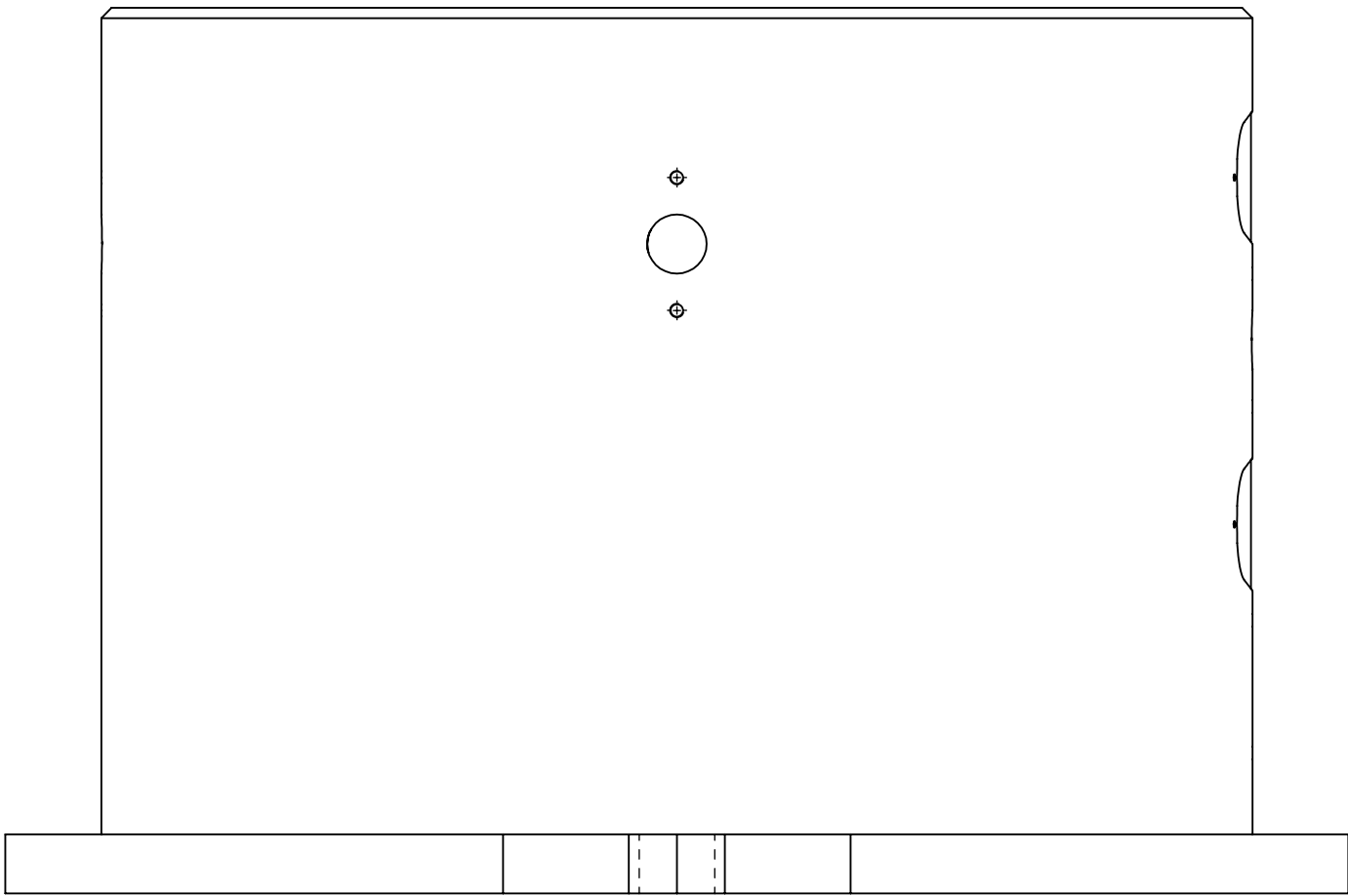


The reproduction, distribution and utilization of this document as well as the communication of its content to third parties without the written permission of YASKAWA EUROPE B.V. is prohibited. All rights reserved in the event of a patent, utility model or design.



rev	revision text	rev date	rev by	appr. date	appr. by
01	modified tolerances	2025-01-10	MichNaeb	2025-01-10	AndLoes
02	general simplification	2025-02-04	AndLoes	2025-02-04	MichNaeb
03	center marks changed	2025-03-10	AndLoes	2025-03-10	MichNaeb

where nothing else is indicated tolerances: DIN ISO 2768-mS welding: DIN EN ISO 15920-A no sharp edges	status: Released		YASKAWA www.yaskawa.eu.com		dimension: 910x910x600 mm	weight: 195,46 kg
	SAP EMEA no:				created: 2022-02-04	drawn: 2022-02-04
	SAP AH no: 222176		approved: 2022-02-07		revision: 04	15 4/5
	title / description: robot stand P-600		drawing-no: 0000130138-100			

YASKAWA

www.yaskawa.eu.com

