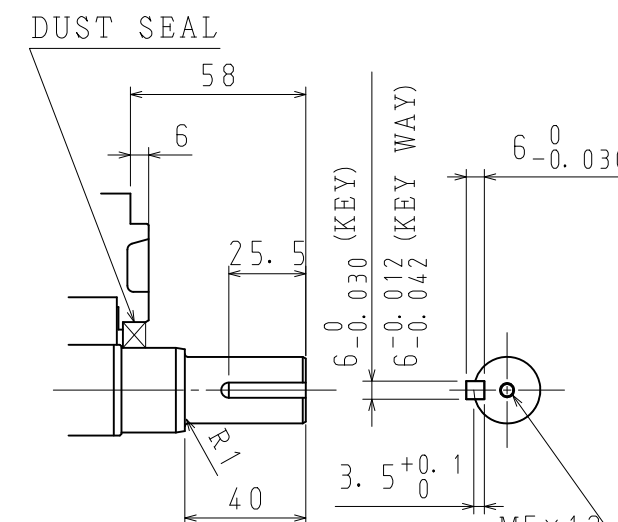
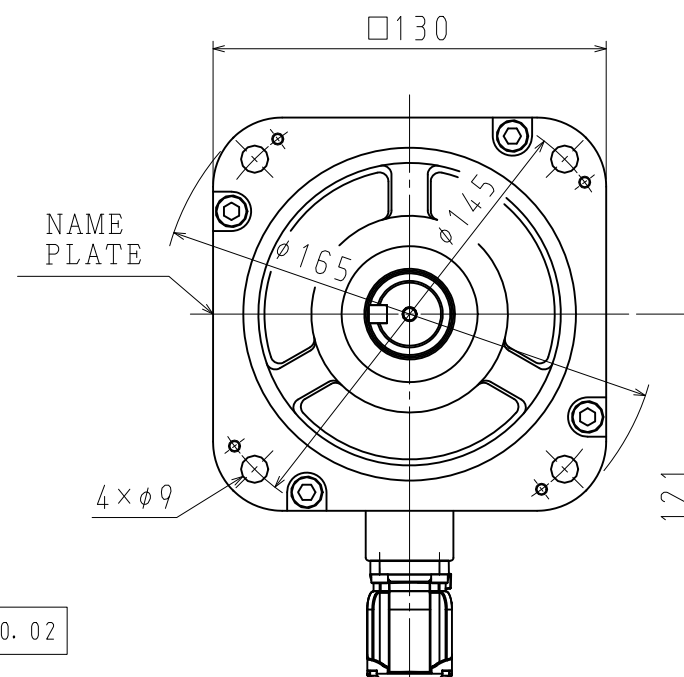
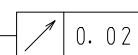
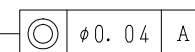
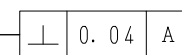
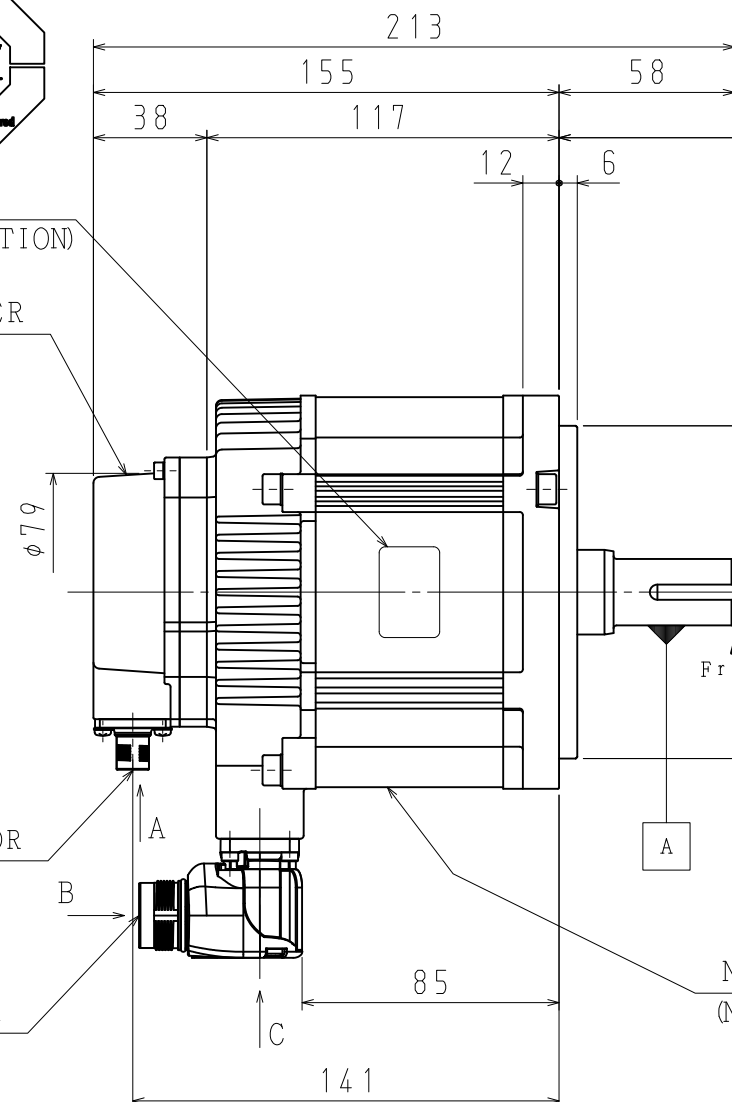
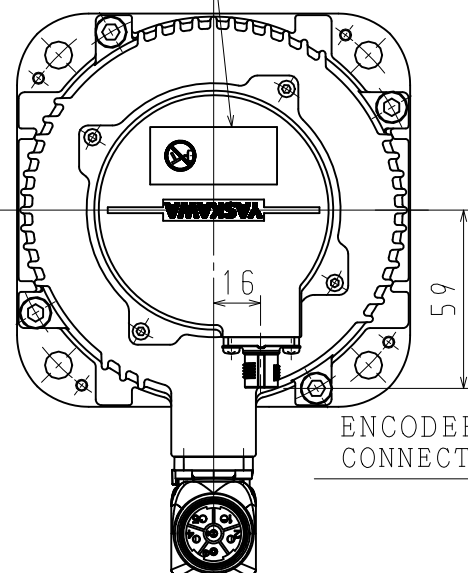


## NAME PLATE

---

### (RATING INDICATION)

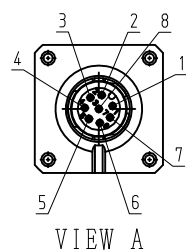
ENCODER  
CONNECTOR

MOTOR  
CONNECTOR

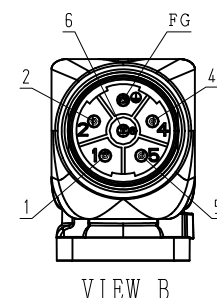
### DETAIL OF SHAFT EXTENSION

## MOTOR TERMINAL CONNECTION

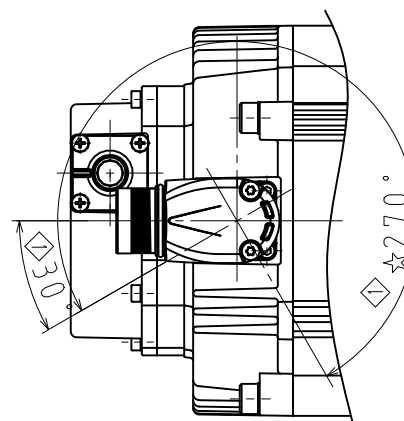
1	PG5V
2	PG0V
3	FRAME GROUND
4	-
5	-
6	DATA (+)
7	DATA (-)
8	-
CON. CASE	FRAME GROUND



1	PHASE V
2	—
4	—
5	PHASE U
6	PHASE W
FG	FRAME GROUND
CON. CASE	FRAME GROUND



```
RECEPTACLE SIZE:M23
HOUSING:SF-5EP1N8AAD00S
MAKER:PHOENIX CONTACT
```



VIEW C

NOTES.

1. ALL DIMENSIONS ARE IN MILLIMETERS.
2. MOTOR SPECIFICATIONS : 900-172-590
3. ENCODER SPECIFICATIONS: 900-172-504 (24BIT INCREMENTAL)
4. VIBRATION : 15 $\mu$ m OR BELOW AT RATED SPEED.
5. PLUGS AND CABLE CLAMPS ARE OPTIONAL.
6. READ AND UNDERSTAND DOCUMENT PACKED WITH MOTOR  
(SAFETY PRECAUTIONS), AND BE CAREFUL USING MOTOR.
7. DEGREES OF PROTECTION: IP67 EXCEPT FOR SHAFT OPENING.
8. DO NOT TOUCH EACH OF CONNECTOR PINS DIRECTLY. IT CAUSE FAILURE.
9. IN CASE OF MOUNTING THIS MOTOR HORIZONTAL, TO PLACE  
THE CONNECTOR DOWN IS RECOMMENDABLE.
10. USE HEXAGON SOCKET HEAD CAP SCREWS FOR MOUNTING MOTOR.
11. MOTOR CONNECTOR COULD BE TURNED IN THE RANGE OF ☆ WITHIN 10 TIMES.

TYPE	RATED OUTPUT kW	RATED TORQUE N · m	TIME RATING	RATED SPEED min <sup>-1</sup>	VOLTAGE V <sub>rms</sub>	RATED CURRENT A <sub>rms</sub>	THERMAL CLASS	WEIGHT kg	ALLOWABLE RADIAL LOAD F <sub>rN</sub>	ALLOWABLE THRUST LOAD F <sub>sN</sub>
SGM7G-13DFFKF	1.3	8.34	CONT.	1500	400 (3PHASE)	5.4	F	7.2	686 (AT SHAFT END)	343

F				DRWN.	H. KATO	TITLE AC SERVOMOTOR Σ-7 SERIES	DRWN. DATE	Jun. 06' 15	REV
				CHKD.	T. HIROSE	SGM7G MODEL 1.3kW	DWG. NO.	900-181-024	
	3 Revised	15-07-07	H. KATO/T. HIROSE	SCALE 1 : 2.5	APRV.		K. AOKI		

SIZE	A
------	---